



*Grow
together*

Capital Campaign

February 1, 2026



ALAMO HEIGHTS
UNITED METHODIST CHURCH

MISSION & VISION

Alamo Heights United Methodist Church is launching the *Grow Together* campaign to enhance our campus as part of our mission to be a Christian community of love, hope, and belonging for all. Throughout the history of AHUMC, our most life-giving times have consistently been the result of stepping forward boldly in faith and connection to others. We were founded to be an instrument of divine love and grace, and that calling persists. *Grow Together* is the next chapter of that legacy.



In 1908, families living north of downtown San Antonio traveled to Travis Park Methodist Episcopal Church to take their children to Sunday School. To accommodate those families closer to home, Travis Park requested a tent from the Methodist Conference, and Alamo Heights Methodist Church was born. Property was subsequently purchased in 1909, and the first permanent structure was built the following year. Through different buildings and campuses, AHUMC has continually embraced transformation for over a century.



From inception, AHUMC has been committed to inclusivity and outreach through programs and initiatives that foster spiritual growth and serve others. Our congregation has always been proactive in embracing new opportunities to meet the needs of our community. We have been shaped by congregants and leaders who remained steadfast to the call to:

- **Welcome all people**
- **Build community**
- **Share God's love**
- **Serve the world**

The identity and location of our church compels us to take bold and sacrificial steps toward encouraging all to grow in faith and find belonging.



THE

NEED



We live in one of the fastest-growing cities in the U.S. This growth invites us to **revitalize our campus** to support new members and foster community engagement. Whether through worship services, programs and initiatives, or community events, our campus serves as the primary point of engagement for all guests and those who call AHUMC home.

- **We create safe spaces** for children and youth to learn and grow.
- **We offer hope and healing** in over 20 weekly recovery and support groups.
- **We house** both Mission Central and a Wesley Nurse to improve the quality of life for those in need.
- **We equip** the youngest among us in our Weekday School with a caring Christian education.
- **We welcome** dozens of like-minded organizations to our campus as they meet and train toward serving the marginalized.





Our wonderful campus provides an important first impression, reflects our commitment to hospitality, and allows us to make a difference in the lives of so many people.

Having recently celebrated our 30th anniversary at this campus, we now face the need for innovations and improvements that will ensure our ability to serve and share God's love with a modern and diverse community. Changing needs and expectations significantly alter how we gather and serve the world. Existing barriers, such as narrow doorways, limited access points, and the lack of modern safety features compromise our ability to truly welcome all people. By evolving, we will provide spaces to nurture faith, build community, and inspire future generations.



Your support of the *Grow Together* Capital Campaign will allow us to boldly step forward in faith, and allow our campus to embrace transformation in our ongoing commitment to serving others.

PROPOSED SOLUTIONS

Grow Together will allow AHUMC to boldly pursue

Enhancing Spaces for Children and Youth (\$2,111,713):

Modernizing children and youth spaces with new carpet, paint, and furnishings will create safe and clean environments. Revitalizing the library promotes family-friendly areas that foster learning and engagement. This initiative will include replacing carpet, updating furnishings, painting, upgrading the fire alarm system, adding vestibules to the Weekday School, expanding two Sunday School classrooms, and renovating the library.



First Impressions (\$550,275): Most guests decide in the first five minutes if they will return. It is essential that our campus provide a first impression that is consistent with our commitment to *welcome all people and share God's love*. Improving initial encounters with clear signage, security lighting, and enhanced landscaped environments establishes an inviting atmosphere. Dedicated guest and accessible parking spots will ensure ease of access for all visitors. This initiative will also include campus-wide modern security and camera upgrades, the sealing and painting of the parking lot, the repainting of fences, and the purchase of a golf cart for guest transportation.

Improving Accessibility (\$1,124,013):

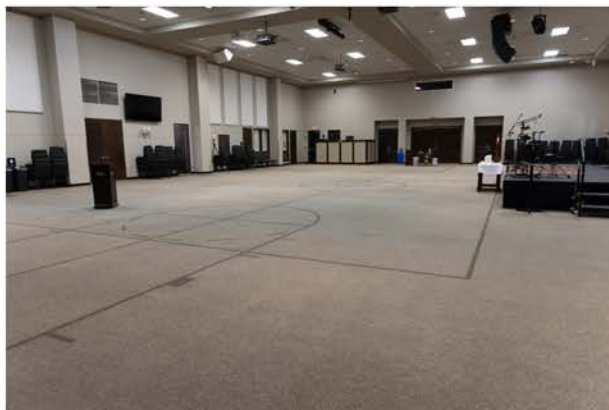
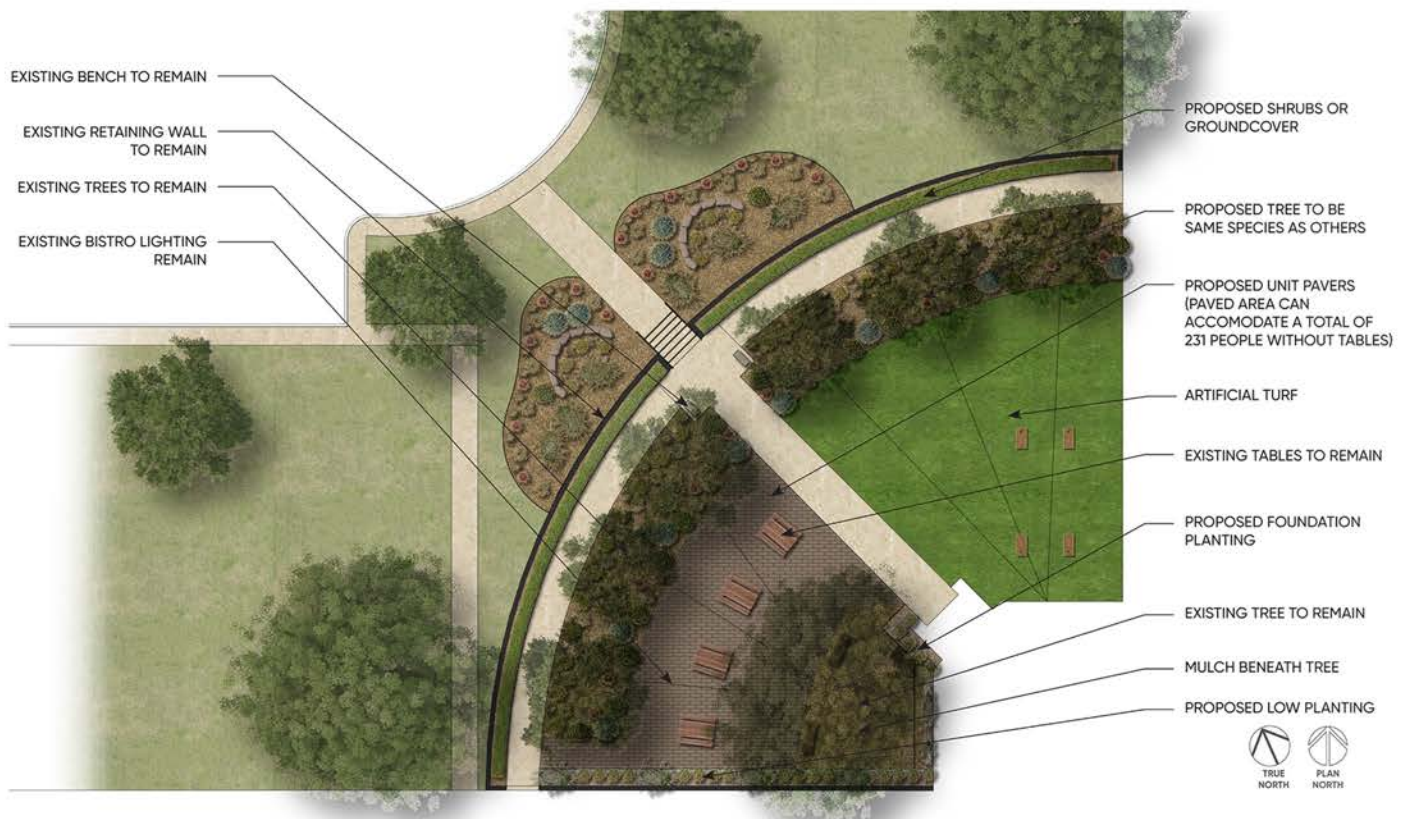
Our United Methodist *Book of Discipline* calls for the protection and inclusion of all people with disabilities. Upgrading our facilities to include ADA-compliant restrooms, entrances, and spaces will allow all individuals to participate fully in the life of the church. This initiative will include providing access to the choir loft and CLC stage, making all restrooms fully accessible, replacing the outdated elevator controls, and adding automatic door openers at entrances.



Updating Gathering Spaces (\$681,000):

Transforming areas such as the Parlor, Atrium, and CLC will develop suitable environments for gathering and small group interactions. The construction of an Atrium terrace will beautify the main entrance to our church, while also creating practical outdoor gathering space for worship activities and events. Other hospitality-centered improvements will include enhanced spaces for small group gatherings, improved restroom facilities, flooring and furniture renovations, and updated automation sensors.





Worship, Outreach, and Events (\$1,196,638): The creation of a flexible chancel area will allow for diverse service formats, while carpet, paint, and furniture updates to the West Wing will strengthen our ability to support our recovery and outreach ministries. Kitchen and classroom upgrades will serve both our community and outside events. This initiative will also establish a fund for updating kitchen equipment, the creation of an emergency fund for rising insurance deductibles and catastrophic repairs, and the creation of a soothing area in the library for young families with children.

DESIRED IMPACT



What began as a tent on the outskirts of downtown San Antonio has become a regional church that serves the San Antonio area and beyond. The same calling that inspired our forebears continues to enliven our purpose to welcome all people, build community, share God's love, and serve the world.

Grow Together aims to

- Foster an inviting and accessible environment for all
- Create a campus for families and future generations
- Nurture faith and transform lives
- Honor our roots and plant seeds for the future



TOGETHER, WE WILL

- **Expand** programs for children and youth
- **Launch** robust young adult and family ministries
- **Create** accessible spaces for everyone
- **Provide** resources and space for support and recovery
- **Equip** Mission Central and our Wesley Nurse to provide aid

INVITATION

Our goal is to raise \$5,700,000 over the next three years—gifts pledged over and above regular annual giving. We need your partnership and support to continue the legacy of Alamo Heights United Methodist Church as we *Grow Together*.

Your support and sacrificial gifts will create a welcoming and safe environment for all. From enhancing our indoor and outdoor spaces to creating a fully accessible building, your involvement will be pivotal in achieving this vision. Your generosity and commitment will pave the way for people to experience the transformative love of Christ. Together, we will ensure our church not only meets the current needs of the community but also extends a warm embrace to future generations.





IMPLEMENTATION

While the general phases below may be subject to change as the campaign progresses, they nevertheless reflect our commitment to responsible stewardship. Any modifications will be determined by the urgency of need, project logistics, or the availability of funding.

PHASE I **Estimated Funding Need: \$2.3M**

Included Renovations and Updates:

- AHUMC Kids Carpet Replacement
- AHUMC Youth Flooring Replacement
- AHUMC Youth Classroom Furnishings
- Atrium Restroom Renovation
- Atrium Terrace Gathering Space/Landscaping
- Automatic Exterior Door Openers
- Building Access and Security System Updates
- Campus-Wide Security Cameras
- Choir Loft and Worship Stage Accessibility
- Disaster Recovery, 25% Reserve
- Elevator Controls Update
- Family-Friendly Library
- Fire System Updates
- Soothing Space for Families
- Weekday School Security Vestibules

PHASE II **Estimated Funding Need: \$1.3M**

Included Renovations and Updates:

- AHUMC Kids Classroom Expansion
- Campus Wayfinding and Signage
- CLC Carpet Replacement and Paint
- Disaster Recovery, 25% Reserve
- East Wing 2nd Floor Restrooms
- Parking Lot Reseal and Paving
- Parlor Carpet Replacement and Paint
- Scissor Lift for Maintenance/Repairs
- Updated Guest and Handicap Parking
- West Wing 1st Floor Restrooms

PHASE III **Estimated Funding Need: \$1.1M**

Included Renovations and Updates:

- Atrium Flooring and Paint
- CLC Lighting Upgrades
- Disaster Recovery 25% Reserve
- Kitchen Equipment Replacement, 50% Reserve
- Modern Worship Projector
- West Wing Carpet Replacement

PHASE IV **Estimated Funding Need: \$1.0M**

Included Renovations and Updates:

- Columbarium Fence Paint and Hardware
- Critical Equipment Control Alarm
- Disaster Recovery, 25% Reserve
- East Wing 1st Floor Restrooms
- Golf Cart Replacement
- Kitchen Equipment Replacement, 50% Reserve
- Landscape Improvements
- Movable Pulpit and Lectern
- Playground Fence Paint and Hardware
- West Wing 2nd Floor Restrooms

FAQ



1

How will Grow Together be managed (details, decisions, logistics)?

A building committee has been established to provide leadership and oversight throughout the entirety of the project. The committee is comprised of nominated congregants with experience in design, construction, and project management, as well as our Senior Pastor, Executive Director, and Facilities Director.

2

How were the Grow Together estimates calculated and do they account for inflation?

Project estimates for *Grow Together* were compiled by a team of AHUMC staff and members with professional experience and education in architecture, design, and construction. The estimates account for project inflation but they will be continually refined as *Grow Together* moves forward.

3

Do the Grow Together estimates include fees and contingencies?

Yes, the estimates include all the necessary consultant, architectural, and professional fees, as well as contingencies for inflation and potential construction cost increases.

4

How does Grow Together invite all to get involved?

Grow Together is for everyone. Each part of this journey will include open invitations to support and serve. From listening and project management to fundraising and prayer, we need all sorts of gifts and offerings. If you are uncertain how you can help, please contact us. We would love to dialogue and find the best place for you to participate. The only way we grow is together.

5

How will Grow Together construction impact AHUMC ministries and services?

The *Grow Together* committee will work with our staff, designers, and contractors to schedule all needed construction with as little disruption as possible. The size of our campus will allow us to temporarily relocate ministries and initiatives as needed. We also intend to capitalize on seasonal rhythms to ensure worship services and liturgical holidays are not impacted.

6

What happens if we do not reach our fundraising goal—will AHUMC borrow money?

The short answer is maybe. As pledges and donations come in over the next three years, the pace of the project may require temporary construction loans. Our hope and belief, however, is that our community can and will fund *Grow Together* completely, and the church will incur no lasting debt.

7

What are our annual maintenance costs and how do we plan to handle future maintenance needs?

The annual maintenance and repair budget for our campus is \$200,000. Each year, our Trustees and our Finance Committee evaluate ordinary maintenance needs and any likely major repairs. While ordinary maintenance needs are funded by the annual operating budget, major repairs draw on an invested capital expenditure fund. One goal of *Grow Together* is to establish a new fund that will provide for maintenance and repair needs due to weather or natural disasters.

8

Why has the Atrium Terrace project already begun?

The Atrium Terrace project was funded by a special gift to the church. Our architects are already at work and we hope to break ground later in the Spring!

9

What is the timeline for Grow Together?

Our estimated timeline for *Grow Together* is three years. While there is much to be done—from fundraising to final installation—we are confident in the ability of our community to get the needed work done.



TIMELINE



JANUARY – MARCH

Private Phase



APRIL

Campaign Team Training



MAY – JULY

Lead Gift Development



SEPTEMBER

Church-Wide Campaign Begins



AUGUST

Spotlight Gatherings



OCTOBER

Commitment Sunday - October 4



NOVEMBER

First Fruit Offerings &
Celebration Sunday - Nov. 1

Ways to Give



GIVE ONLINE

Visit ahumc.org/grow to create a one-time or recurring electronic contribution with a credit card or bank account.

Scan here
for
Online
Giving



QCD GIVING

For information on making Qualified Charitable Distributions (QCD) from an Individual Retirement Accounts (IRA), please e-mail lhannah@ahumc.org or call 210-826-3215.

Scan here
for QCD
Giving
Info



STOCK GIVING

For instructions on making a gift of appreciated stock, please e-mail lhannah@ahumc.org or call 210-826-3215.

Scan here
for Stock
Giving
Info



CHARITABLE TRUSTS OR MONEY MARKET GIVING

Please e-mail lhannah@ahumc.org or call 210-826-3215 for help coordinating with your broker or financial advisor to set up a transfer.



CASH OR CHECK

Deliver your gift in worship or mail it to:

AHUMC
825 East Basse Rd.,
San Antonio, TX 78209.

I AM the VINE

"I AM the vine; you are the branches. [1] Those who abide in me and I in them bear much fruit." Our efforts to provide for the future of AHUMC begin and remain in the Christ who calls us to be known by our love. [2]

You are the BRANCHES

As branches, we live into the divine instruction to "love your neighbor as yourself." [3] Equipping AHUMC to love our neighbors includes the faithful stewardship and development of our resources and campus as we welcome all people, build community, share God's love, and serve the world.

Together, we plant SEEDS

Mark's Gospel reminds us that even the "smallest seeds," when planted, "grow and put forth large branches to provide shade." [4] Each investment we make will grow to serve and provide for generations to come.

And honor ROOTS that run deep

Grounded in the nourishing soil of those who have gone before, we join the unending song. "Like a tree planted by water, sending out its roots by the stream. It shall not fear when heat comes, and its leaves shall stay green; in the year of drought it is not anxious, and it does not cease to bear fruit." [5]



More Info at:

ahumc.org/grow

[1] John 15:5

[2] John 13:35

[3] Leviticus 19:18, Matthew 22:39, Galatians 5:14

[4] Mark 4:30-32

[5] Jeremiah 17:8



ALAMO HEIGHTS
UNITED METHODIST CHURCH
825 E BASSE RD • SAN ANTONIO, TX 78209
ahumc.org | 210.826.3215